



# KENYA

## COUNTRY PROFILE

# 2019



Alice Omutse cassava farmer in Teso South, Busia, Kenya.

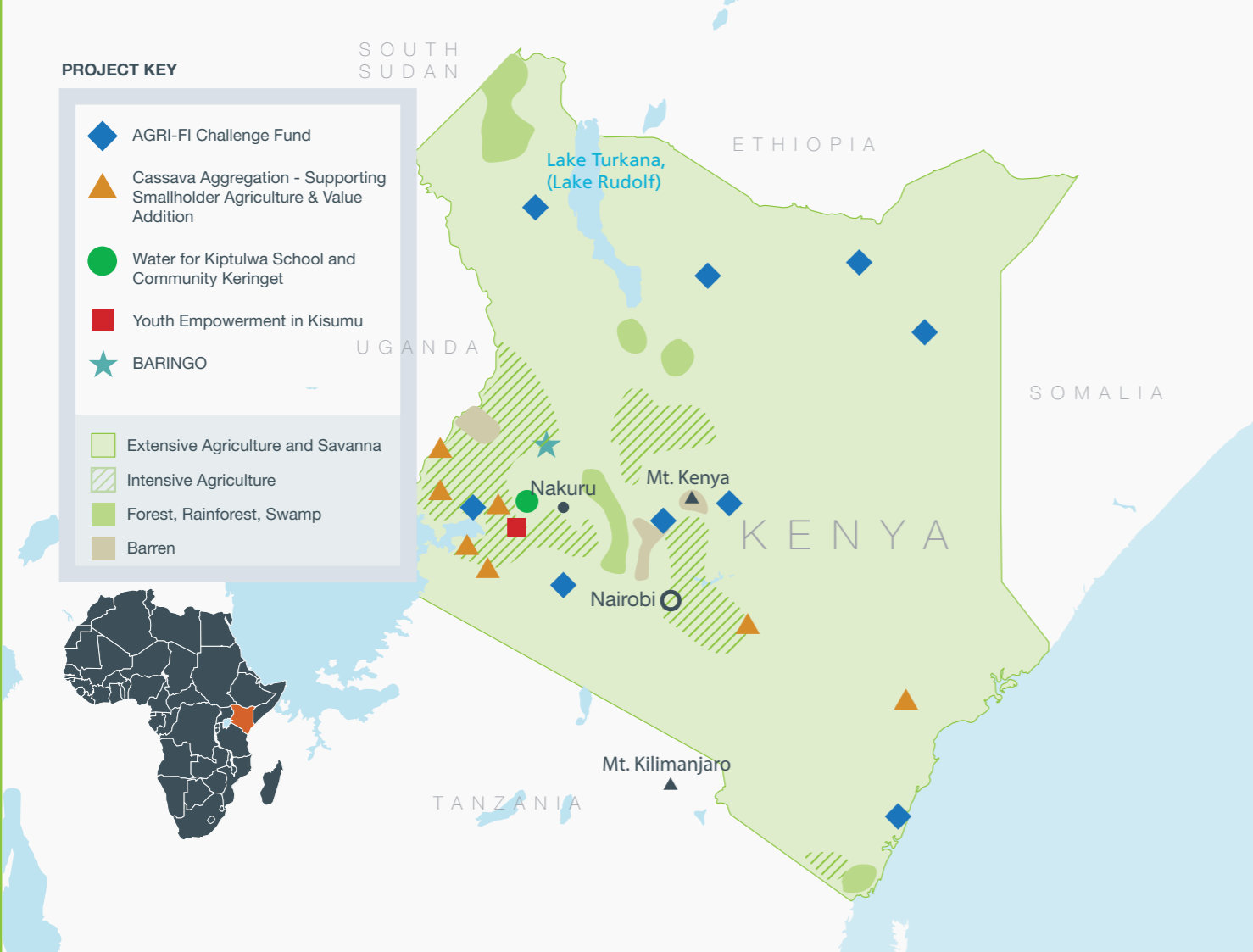
Self Help Africa in Kenya works with smallholder farmers to move them from subsistence to commercialisation through a range of projects - from supporting those in extreme poverty, to assisting enterprise development and business partnerships.

SHA works with smallholder farmers, farmer groups and associations across the country, including in the arid and semi-arid areas to address food security and nutrition challenges, and link farmers to markets through a farming as a business approach.



### PROJECT KEY

- AGRI-FI Challenge Fund
- Cassava Aggregation - Supporting Smallholder Agriculture & Value Addition
- Water for Kiptulwa School and Community Keringet
- Youth Empowerment in Kisumu
- BARINGO
- Extensive Agriculture and Savanna
- Intensive Agriculture
- Forest, Rainforest, Swamp
- Barren



Beatrice Abukayot and her son at her farm in Teso South, Busia, Kenya.

	Programme	Donor	Total Budget	Time Frame	Implementing Partner	Programme Area
01	Agri-FI Kenya Challenge Fund	European Commission	€ 24,434,796	2018 ▼ 2022	Imani Development Ltd (IDL)	Nationwide, with a focus on arid and semi-arid lands
02	Cassava Aggregation - Supporting Smallholder Agriculture and Value Addition	European Commission	€ 7,517,496	2016 ▼ 2022	UCRC (Ugunja Community Resource Centre), Ustadi Foundation, RhEAL Solutions, Rafiki Microfinance Bank, and TruTrade	Coastal and Western Regions
03	Water for Kiptulwa School and Community, Keringet	The Rotary Foundation	€ 86,702	2017 ▼ 2019	Direct implementation	Keringet, Kiptulwa
04	Youth Empowerment in Kisumu	Designer Group	€ 59,404	2018 ▼ 2019	Direct implementation	Kisumu
05	Baringo Resilience Initiative: Nurturing Greater Opportunity (BARINGO)	European Commission	€ 5,500,000	2019 ▼ 2024	Farming Systems Kenya and the Sustainable Agricultural Information Initiative	Tiaty, Baringo North and Mogotio sub-counties in Baringo County

### Objective: To improve integration of smallholder farmers/pastoralists in climate-smart value chains.

**A**gri-FI Kenya Challenge Fund is a €24 million five-year agri-business support programme that is part of the European Union's Agriculture Financing Initiative programme.

It supports productive, adapted and market-integrated smallholder agriculture, including a contribution to the Africa Investment Facility.

The objective of the project is to increase the capacity of 100,000 smallholder farmers/pastoralists to practice environmentally sustainable and climate-smart agriculture as a business in inclusive value chains.

Over five years (2018-2022), Agri-FI will assist smallholder households to move from subsistence farming to a more business-oriented approach.

There will be a focus on:

- Promoting environmentally sustainable farming practices;
- Participation of groups that are often excluded, including women and rural youth. They will have opportunities to participate, and profit from doing business across the value chain through input supply, production, processing, aggregation, marketing and retail.

At the heart of Agri-FI is an €18 million Challenge Fund which will be invested in supporting enterprise development projects.

The Fund awards grants that need to be matched by the applicants, to support agri-businesses, NGOs and other entities to use market-based approaches to tackle particular development challenges.

The primary challenge is to increase the integration of small-scale farmers and semi-nomadic pastoralists, who are frequently excluded from agri-value chains. Business models have smallholders as suppliers of agri-products or customers requiring inputs, finance and equipment.

#### THE PROJECT IN NUMBERS:

- **100,000** smallholders/pastoralists integrated in various agricultural value chains
- Turnover increase of at least **25%** for at least 50 agri-enterprises
- **10,000** jobs created
- **70%** increase in smallholder/pastoralist production
- At least **20,000** hectares under climate-smart land management practices
- **15** trade associations strengthened
- **600,000** livelihoods transformed

Self Help Africa is collaborating with Imani Development, a private economic development consultancy, focusing on three specific thematic areas:

- Climate-smart agricultural inputs
- Agri-processing and aggregation
- Nutrition

The funded projects are required to support businesses in a wide variety of undertakings, including farmer training on climate adaptation, capacity development of cooperatives, equipment investments, improving quality standards, participatory research and marketing and branding investments, among others.

The Agri-FI project seeks to explore and address some of the barriers to women's participation, together with the question of access and control of resources. It provides training both to farmers' organisations and to community-based organisations.

Agri-FI is backed by contributions from international, public, private and civil society interests. The Challenge Fund is financed by the European Commission (90%), and by SlovakAid and Self Help Africa (10%).

As part of a blended financing model, the programme supports Challenge Fund applicants to leverage investment from European Investment Bank (EIB) partner institutions.

- **100,000** total direct beneficiaries
- **10,000** net equivalent jobs created
- **50** agri-businesses supported (to increase turnover by at least 25%)
- **15** trade associations supported

### Objective: To increase food and nutrition security, employment and income among 28,000 farming households.

**C**assava is increasingly promoted by the government of Kenya due to its multiple uses as flour, starch, and livestock feed, and its ability to provide food throughout the year. However, the cassava sector remains largely underdeveloped, and significant support is required to enable smallholder farmers to increase their incomes by capitalising upon growing demand.

To this end, Self Help Africa is leading a five-year programme, funded primarily by the European Union, to strengthen the competitiveness of the cassava value chain in Kenya. Building on previous work funded by the Walmart Foundation and Irish Aid, which reached 12,000 households, the current project scales this to 28,000 farmers (including 60% women) in the Western, Nyanza, Eastern and Coastal regions of Kenya. The programme is being implemented with local NGOs Ugunja Community Resource Centre (UCRC), RhEAL Solutions and USTADI, TruTrade, and Rafiki Microfinance Bank.

This project - Cassava Aggregation: Supporting Smallholder Agriculture and Value Addition - is facilitating the availability of quality-declared cassava planting material, working with the Kenya Agriculture and Livestock Research Organization (KALRO) to promote farmer production of quality cassava stems.

SHA is training seed producers on stem production, soil fertility, field management, pest and disease control, harvesting and post-harvest handling, processing and storage.

The project is also addressing capacity gaps among cassava farmers, around knowledge of best-practice cassava production. Self Help Africa and the Ministry of Agriculture, Livestock and Fisheries, using the lead farmer and Farmer Field School approaches, are training lead farmers to disseminate trainings to 28,000 smallholders (at least 60% women), organised into business groups. Farmers are being trained on good agricultural practices and climate-smart agriculture and farming as a business - including farm and market planning, enterprise profitability, quality standards, aggregation, post-harvest management and value addition.

In line with the programme's value chain approach, Self Help Africa is investing in the development of cooperatives, which enable farmers to bulk their produce, reduce input costs and provide marketing and market linkages. The cooperatives are also linked to financial institutions, in particular Rafiki Microfinance Bank, who provide working capital and support further expansion. The programme has also supported Rafiki Microfinance Bank to develop suitable loan products for the different actors along the cassava value chain.

- **28,000** households (16,800 women, 11,200 men)



Pasiliano Omaseti, North Teso, Busia, Kenya.

#### THE PROJECT IN NUMBERS:

- **5,600** net equivalent jobs created
- **23,800** cassava farmers linked to market opportunities
- **100** aggregation centres supported
- Building capacity of 14 micro, small and medium enterprises and cooperatives



Richard Ngerich (father), in Kyogong, Bomet County, Kenya.

### 05 BARINGO RESILIENCE INITIATIVE: NURTURING GREATER OPPORTUNITY

**Objective: To improve access to food, nutrition and income security in northern Kenya.**

The Baringo Resilience Initiative: Nurturing Greater Opportunity (BARINGO) project is seeking to contribute to food, nutrition and income security for 60,000 beneficiaries in northern Kenya.

The BARINGO project, which started in 2019, aims to promote secure and sustainable livelihoods amongst individual households that are prone to drought in Baringo County, enabling them to spread their risk and prevent production asset loss.

Mitigating the effects of climate change and building community resilience, the project is seeking to increase the food, nutrition and income security of smallholder agro-pastoralist and pastoralist households in Baringo County.

10,000 households will be supported to adopt productive, climate-resilient and nutrition-sensitive agriculture and livestock production activities.

The goal is to ensure that targeted households have improved access to extension services and diversified farming systems. At least 40,000 hectares of land will be under improved land management or fodder production.

- 60,000 households



Richard Ngerich (son), in Kyogong, Bomet County, Kenya.



Agnes Amelia Awoch, farmer in Lele Village, West Kisumu, County Kisumu, Kenya.

### 03 KERINET COMMUNITY EMPOWERMENT PROJECT

**Objective: To improve access of rural households to clean water and sanitation.**

Located in the fertile Rift Valley, the Keringet area is very rural and lacks basic infrastructure. Most of the population are subsistence farmers with low incomes. In the neighbourhood of Kiptulwa, many households struggle to access clean water for both household domestic needs and for livestock and agriculture, and so have to walk over one kilometre to fetch water from an unprotected source. The main primary school in Kiptulwa has also been without proper latrines or pumped, safe water for a number of years.

In partnership with a local Rotary club (Rotary Keringeta), Self Help Africa is increasing access to clean, safe water and encouraging good hygiene and sanitation practices among the community and primary school pupils. Local water management committees have been set up in the community and the school and have helped to identify needs and appropriate sites for water access points. Two boreholes will be drilled and equipped, two springs rehabilitated, pumps installed and a water tank and tap provided at the school. Already, there are fewer incidences of diarrhoea and other waterborne diseases.

- 3,371 with increased access to clean water, sanitation and hygiene
- 538 school children with access to Water and Sanitation for Health (WASH) facilities at school

### 04 YOUTH EMPOWERMENT IN KISUMU

**Objective: To increase access to employment opportunities for 200 youths.**

Most young people living in the informal settlements in Kisumu county have limited opportunities to access meaningful employment. Youth unemployment is high in Kisumu, due to the slowdown in employment in the region and the lack of higher education, and is one of the biggest issues facing young people in Kisumu. It has led to idleness, drug use and desperation among youths in Kisumu, especially those found in Kondele and Obunga slums.

In partnership with Designer Group, an Irish construction and engineering company working in Kisumu on the East African Breweries (EAB) site, Self Help Africa is creating opportunities for 200 youths (50% male, 50% female) living near the EAB site to develop basic entrepreneurial, financial literacy and life skills over a 12 month period. A selection of the participants will also be afforded placement and internship opportunities with Designer Group and other local businesses.

Further to this, the Youth Empowerment project will partner with local technical institutions to create opportunities for 30 partial scholarships and internship opportunities in local cooperatives for young people.

- 200 youths (aged 18 to 34)

## KENYA

P. O. Box 25503, 00100

Nairobi.

Tel. +254 703 946477

E-mail: [kenya@selfhelpafrica.org](mailto:kenya@selfhelpafrica.org)

.....  
July 2019

Rose Mutai, Semoi Village, Bomet County, Kenya  
Photo credit: Ken O'Halloran, 2015.